

PENNER & ASSOCIATES ARCHITECTS

ARCHITECTURE • PLANNING • DEVELOPMENT • INTERIORS

417 Gettysburg Street Pittsburgh, PA 15206 Email: mail@pennerarchitects.com Fax 412-363-5315 Phone: 412-363-5300



SOCIAL HALL FEASIBILITY STUDY SAINT AGNES CHURCH

DIOCESE OF GREENSBURG
Father Ted Kaszmarek, Pastor

North Huntingdon, PA
(724) 863-2626

OCCUPANCY:	Assembly hall, meeting rooms and kitchen facilities
AREA:	22,700 square feet
CONSTRUCTION COST:	\$2,400,000 (estimated)
DESCRIPTION:	This project involves a feasibility study for a new assembly hall and associated improvements for the existing church. Two schemes are provided, along with construction cost estimates and an in-depth analysis of each scheme.

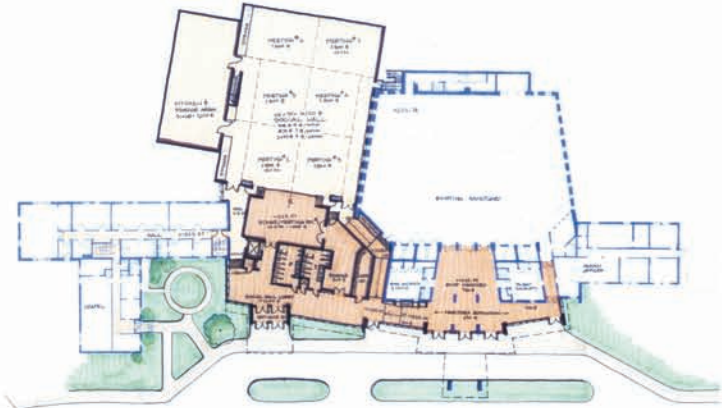
PENNER & ASSOCIATES ARCHITECTS

ARCHITECTURE • PLANNING • DEVELOPMENT • INTERIORS

417 Gettysburg Street Pittsburgh, PA 15206 Email: mail@pennerarchitects.com Fax 412-363-5315 Phone: 412-363-5300



BASEMENT



FIRST FLOOR

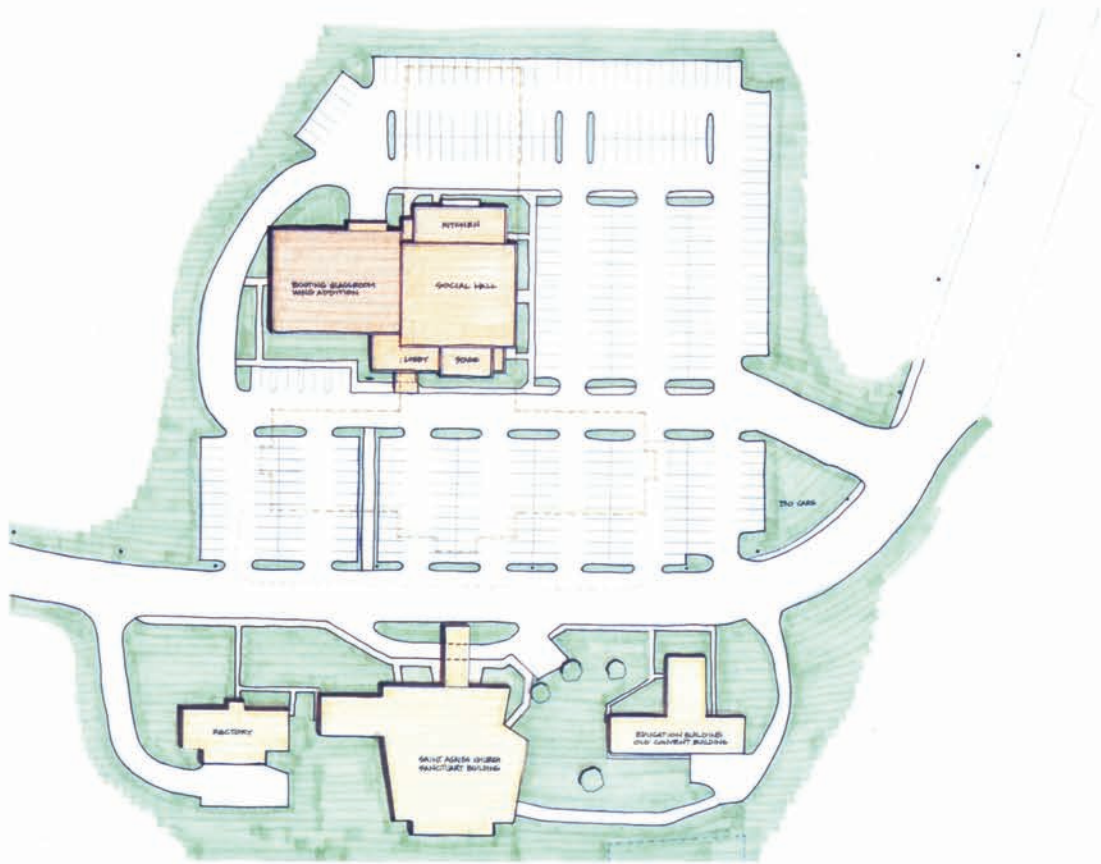


SECOND FLOOR

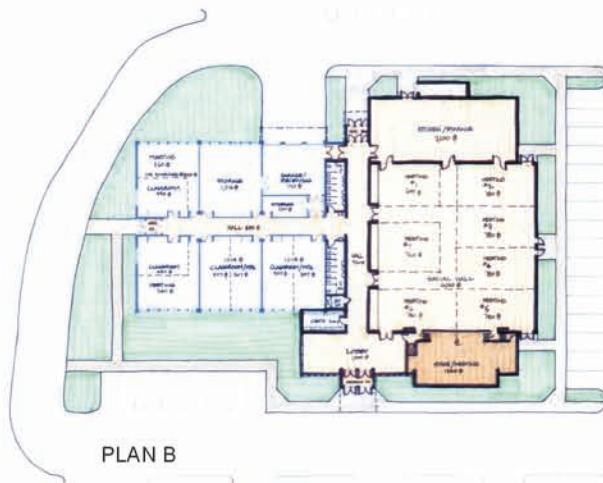
PENNER & ASSOCIATES ARCHITECTS

ARCHITECTURE • PLANNING • DEVELOPMENT • INTERIORS

417 Gettysburg Street Pittsburgh, PA 15206 Email: mail@pennerarchitects.com Fax 412-363-5315 Phone: 412-363-5300



SITE PLAN



PLAN B

SOCIAL HALL FEASIBILITY STUDY SAINT AGNES CHURCH
